

Planning - Oxford City Planning Committee

On **Tuesday 18 October 2022** At **6.00 pm**

www.oxford.gov.uk



Presentations

Contents

Note: Planning Committee presentations contain mostly pictures, maps and plans. These are not in an accessible format.

To see full details of the application including full plans, representations, public comments and supplementary information, please [click here](#) and enter the relevant Planning Reference number in the search box

- | | | |
|----|---|---------|
| 3. | 22/01712/FUL: UYS Limited, Garsington Road, Oxford OX4 2BW | 3 - 12 |
| 4. | 22/01538/FUL: 72 The Slade, Oxford, OX3 7DX | 13 - 26 |

The agenda, reports and any additional supplements can be found together with this supplement on the committee meeting webpage.

*View or subscribe to updates for agendas, reports and minutes at mycouncil.oxford.gov.uk.
All public papers are available from the calendar link to this meeting once published*

Oxford City Council, Town Hall, St Aldate's Oxford OX1 1BX

This page is intentionally left blank

Oxford City Planning Committee Presentation

Reference Number: 22/01712/FUL

3

**Site Address: UYS Ltd, Garsington
Road, Oxford OX4 2BW**

www.oxford.gov.uk

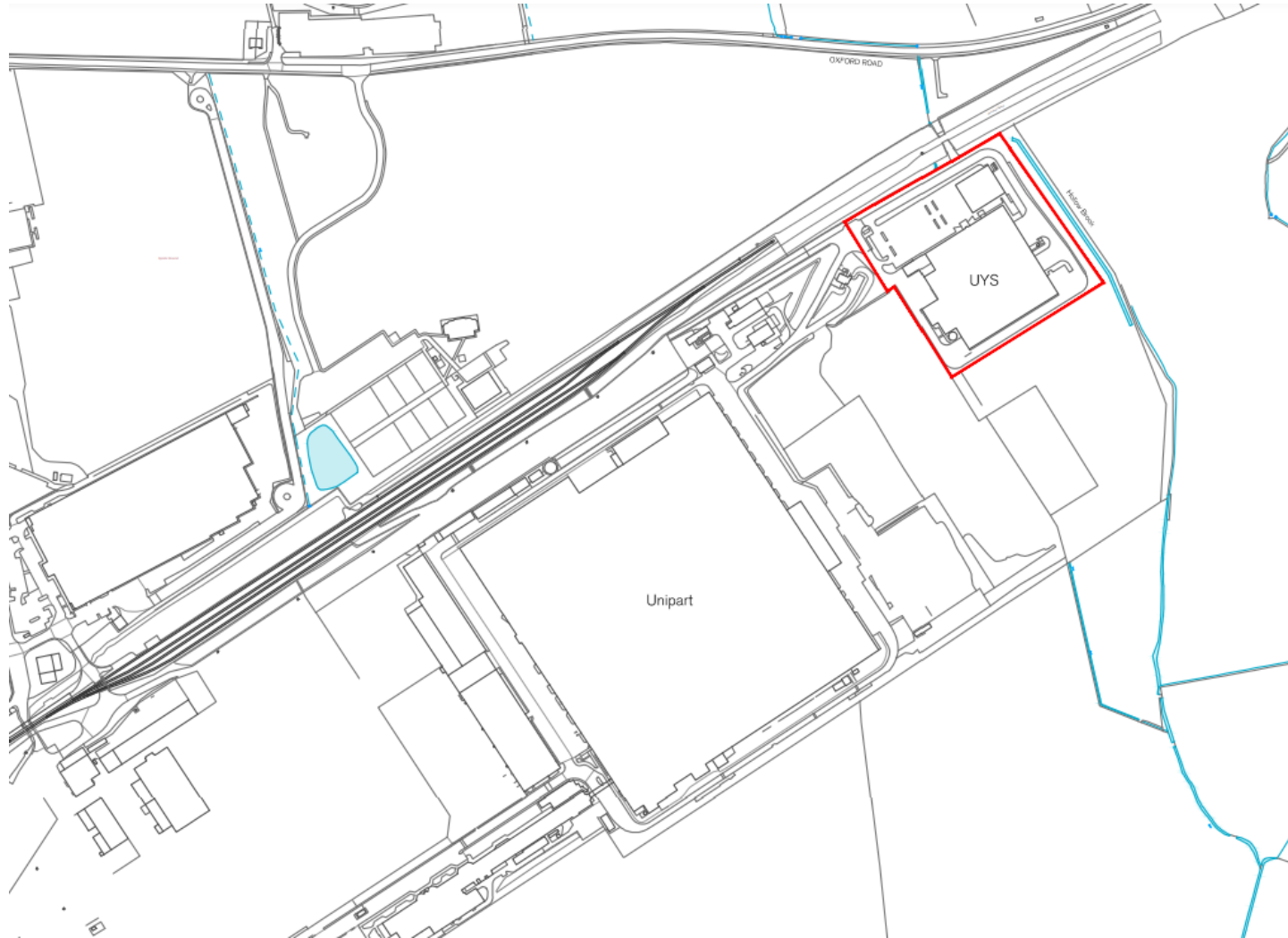


**OXFORD
CITY
COUNCIL**



Location Plan

4



Site Aerial View



**OXFORD
CITY
COUNCIL**



5



Existing UYS Building

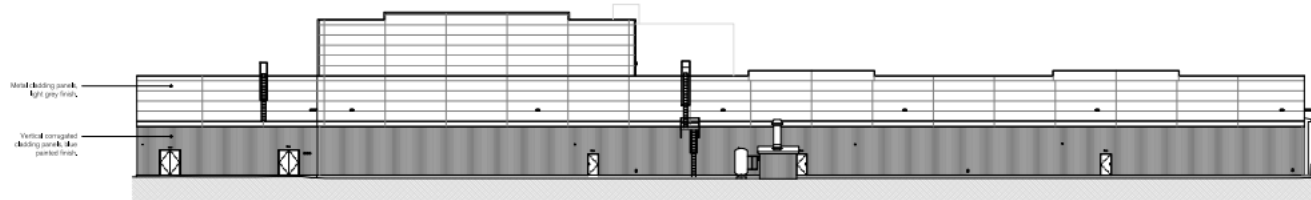
gov.uk



**OXFORD
CITY
COUNCIL**



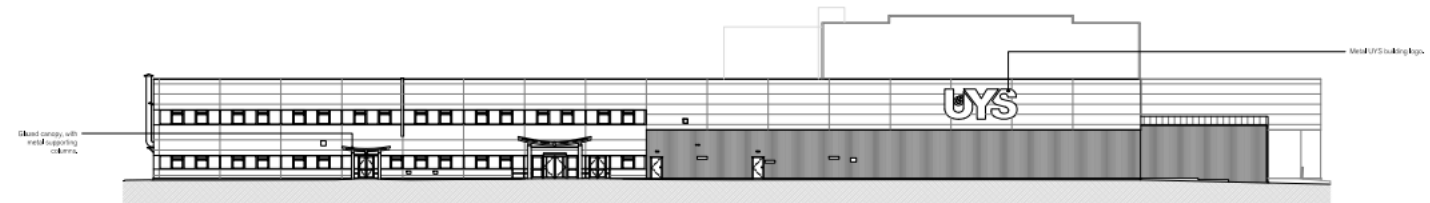
Existing Elevations



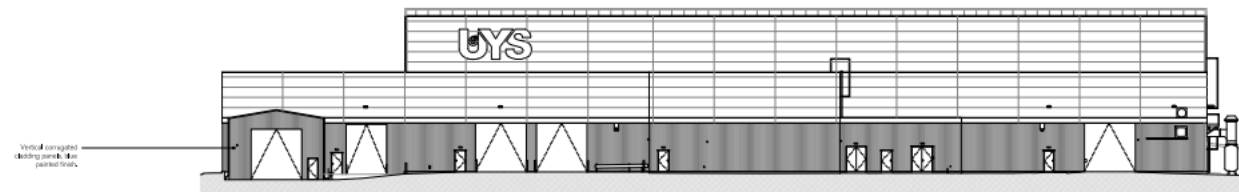
① Main Building, South Elevation
1:200



② Main Building, West Elevation
1:200



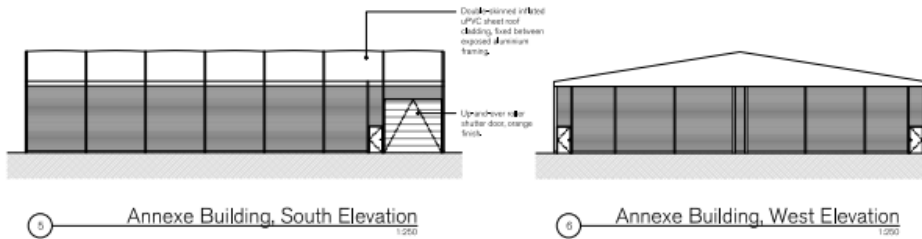
③ Main Building, North (Front) Elevation
1:200



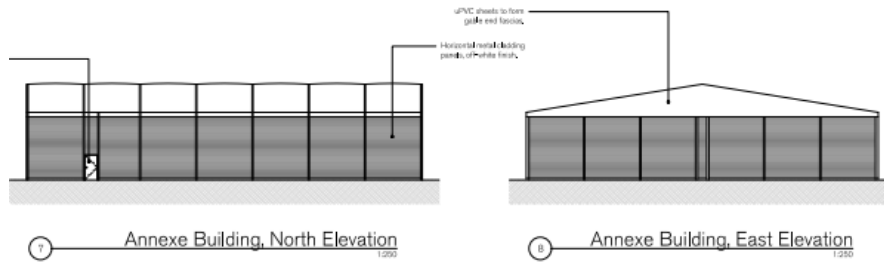
④ Main Building, East Elevation
1:200



Annex Building

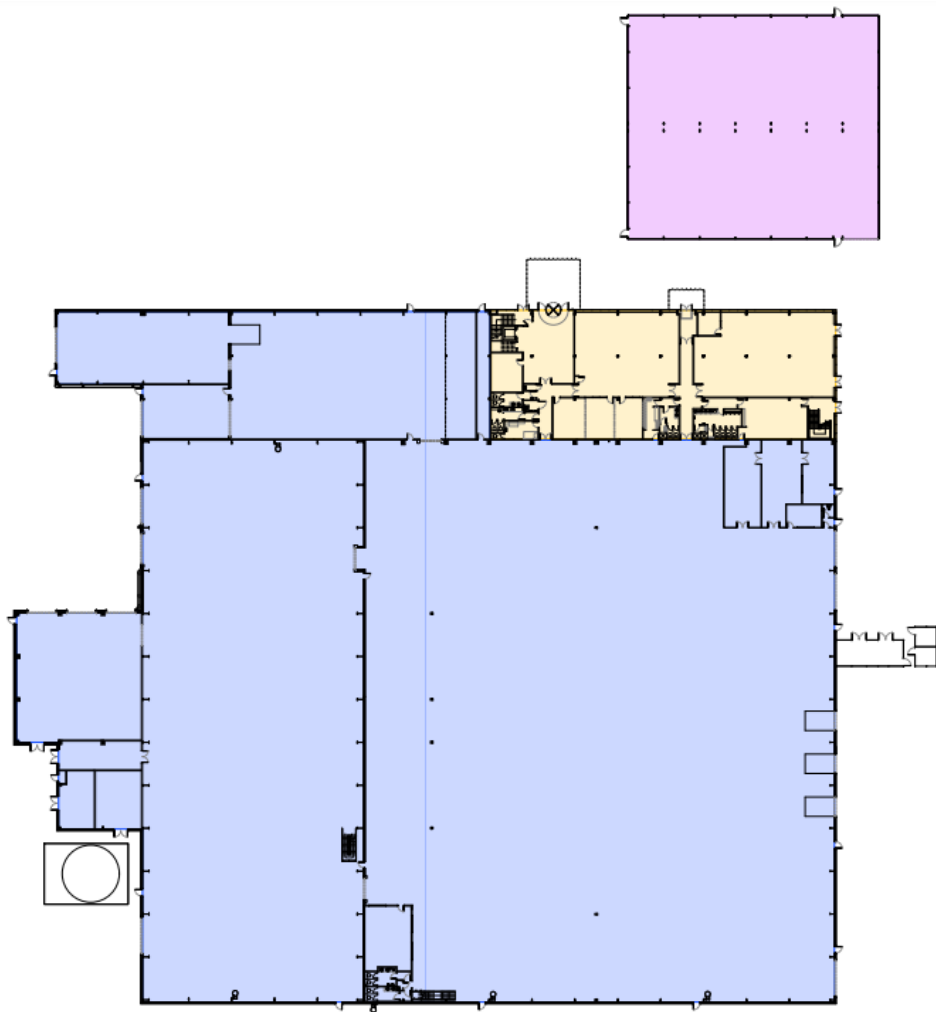


8



Existing Floor Plans

6



www.oxford.gov.uk

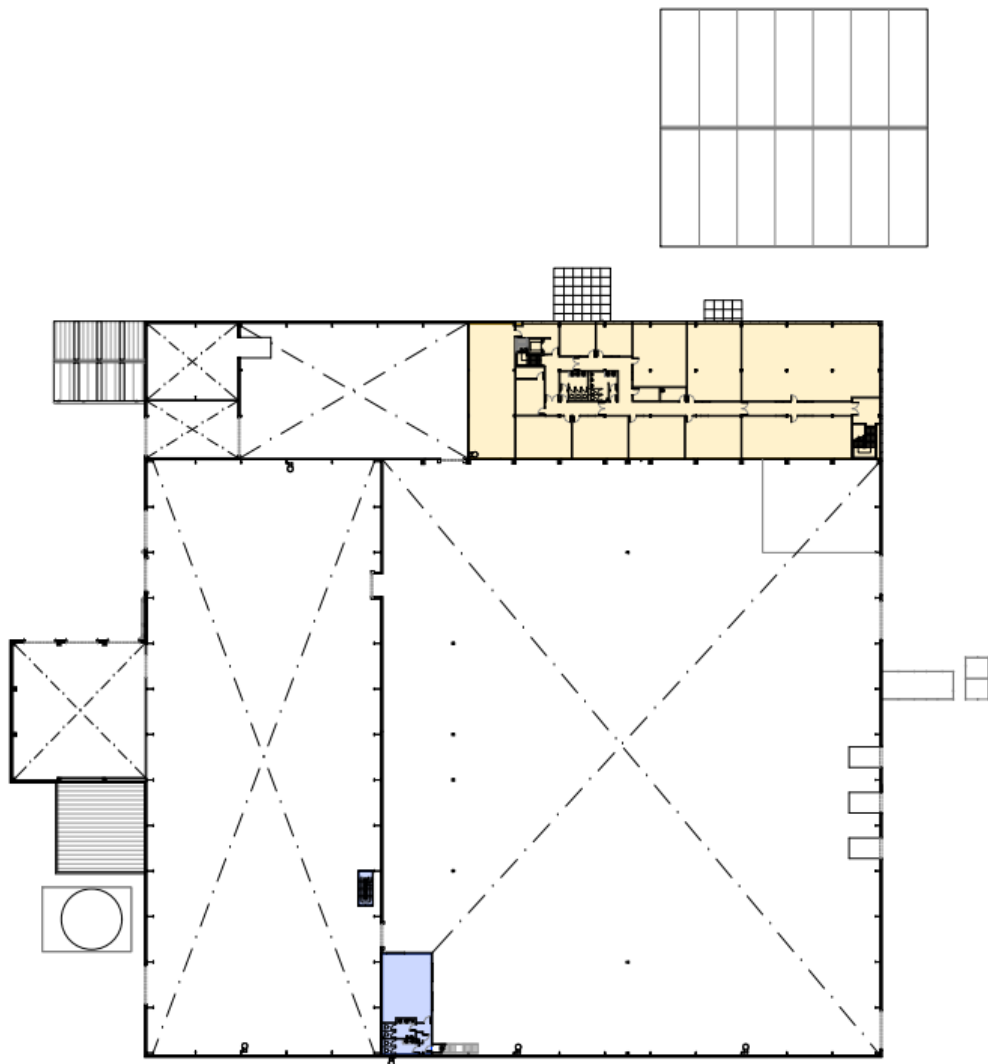


**OXFORD
CITY
COUNCIL**



First Floor Plan

10

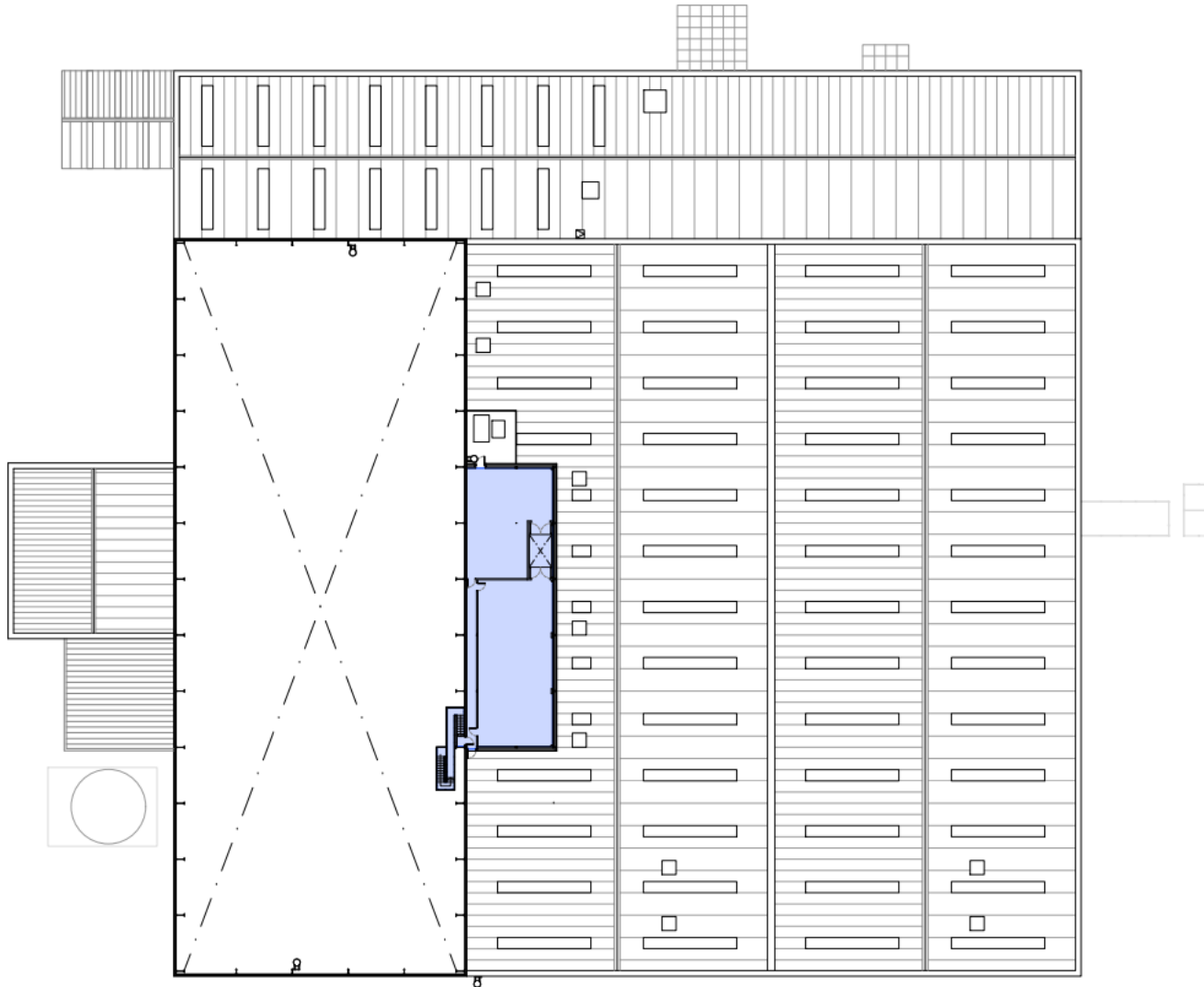


www.oxford.gov.uk



Second Floor and Roof Plan

11

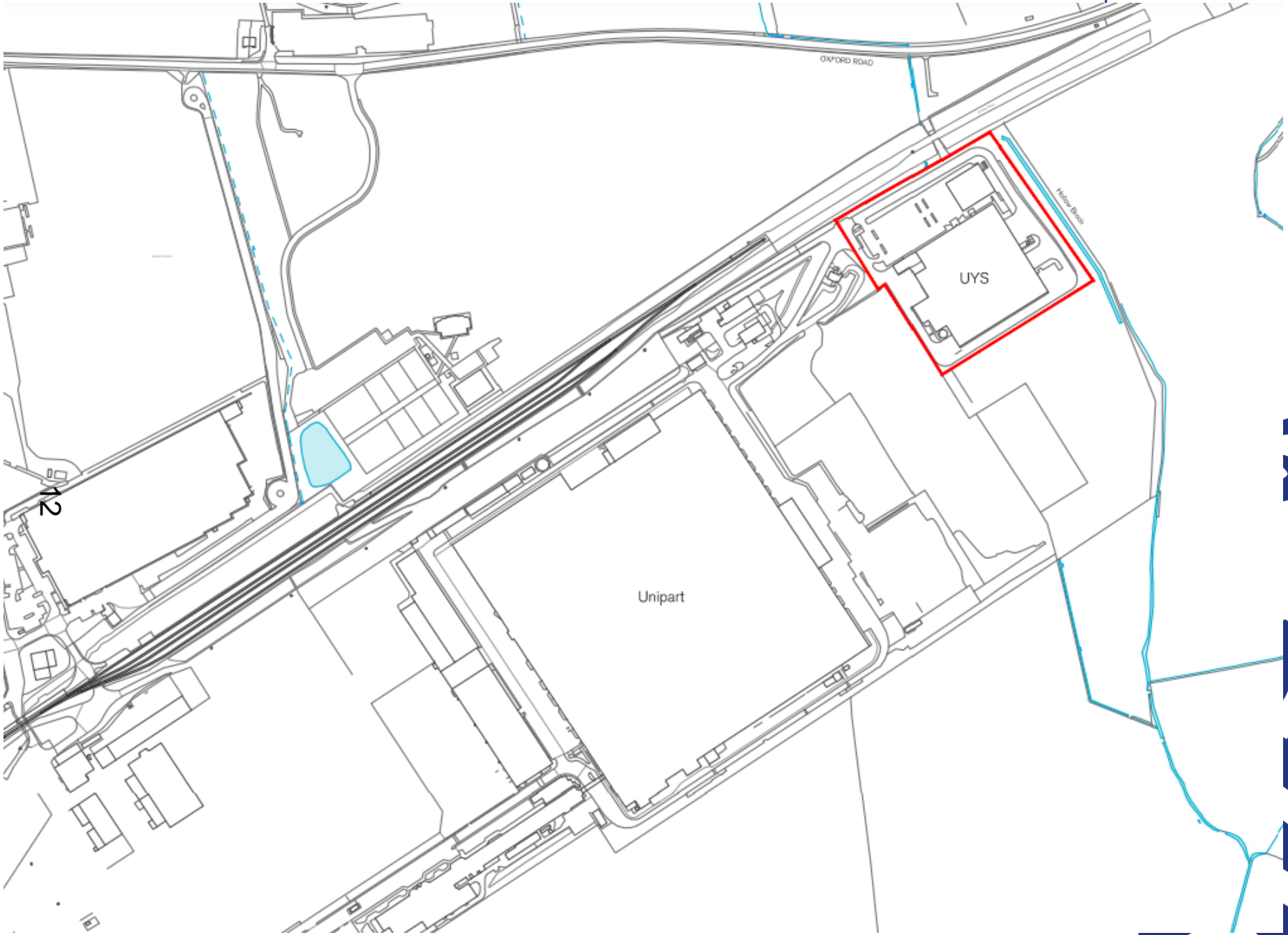


www.oxford.gov.uk



**OXFORD
CITY
COUNCIL**





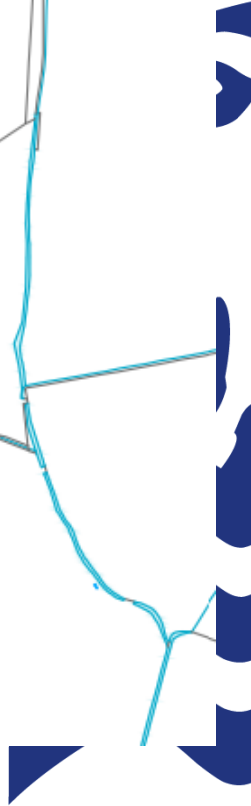
OXFORD ROAD

Hollow Brook

UYS

Unipart

12



Oxford City Planning Committee Presentation

www.oxford.gov.uk



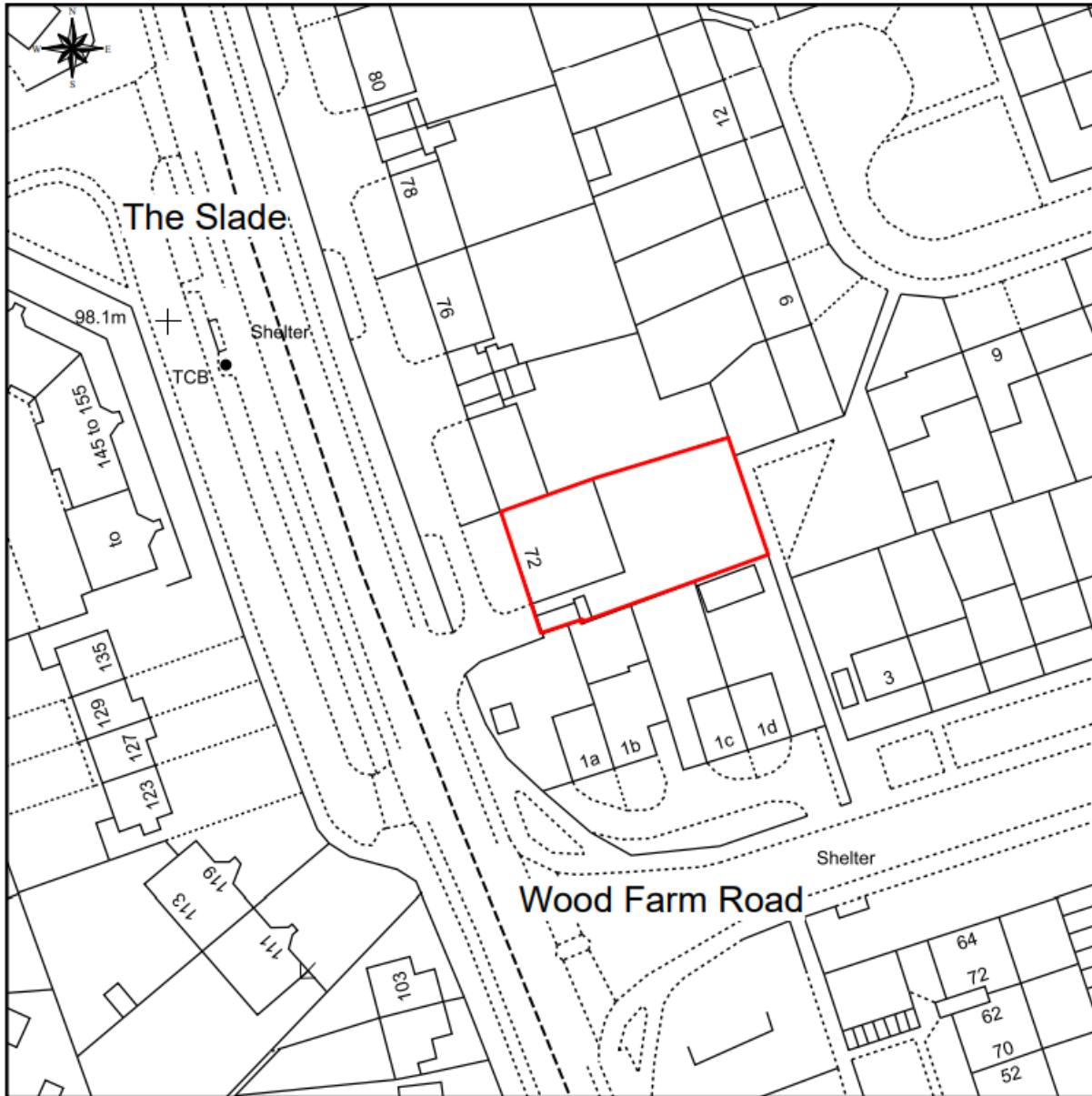
13

Reference Number: 22/01538/FUL

Site Address: 72 The Slade



Site Location Plan





www.oxford.gov.uk





www.oxford.gov.uk



**OXFORD
CITY
COUNCIL**





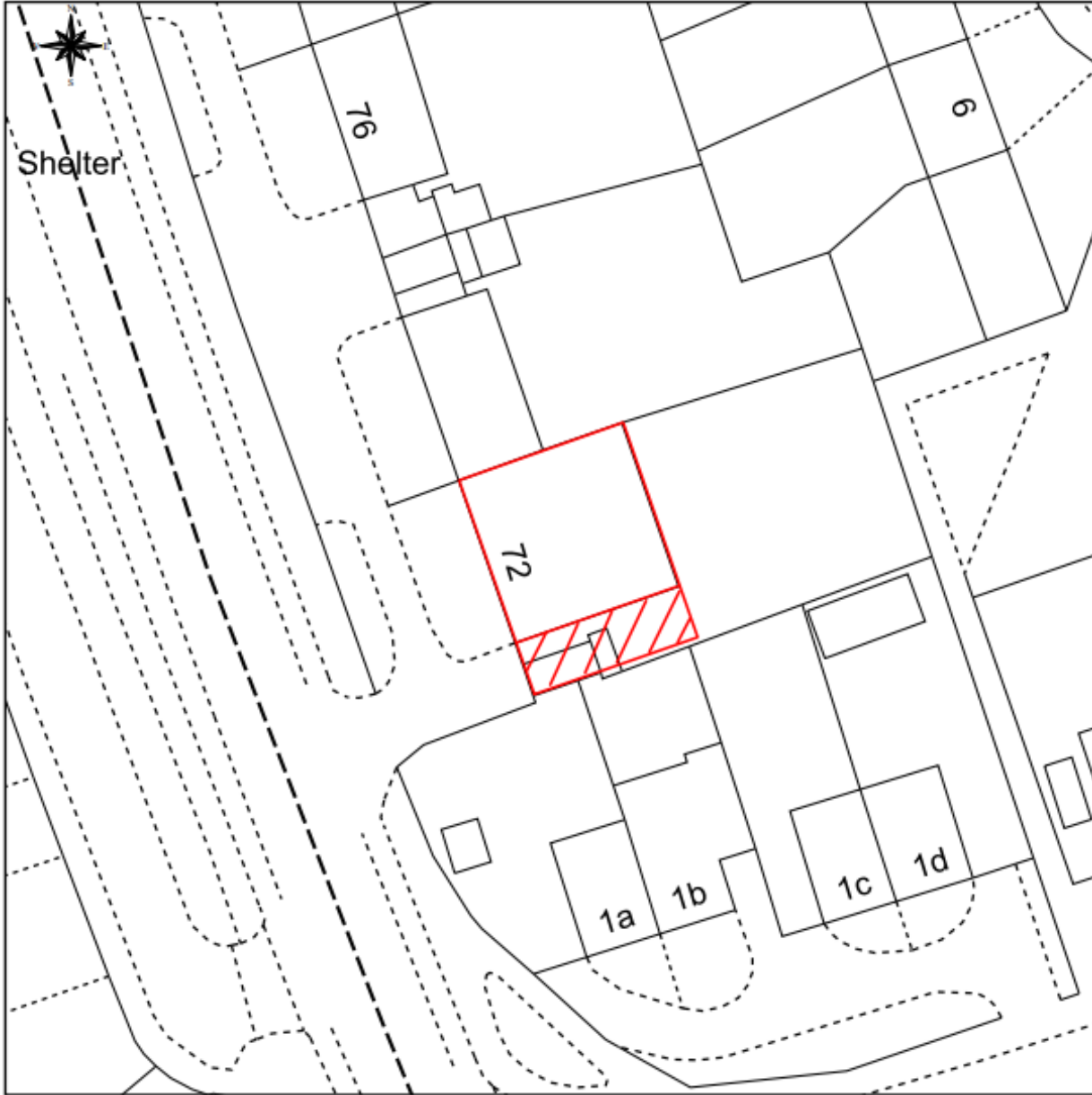
www.oxford.gov.uk



**OXFORD
CITY
COUNCIL**



Block Plan

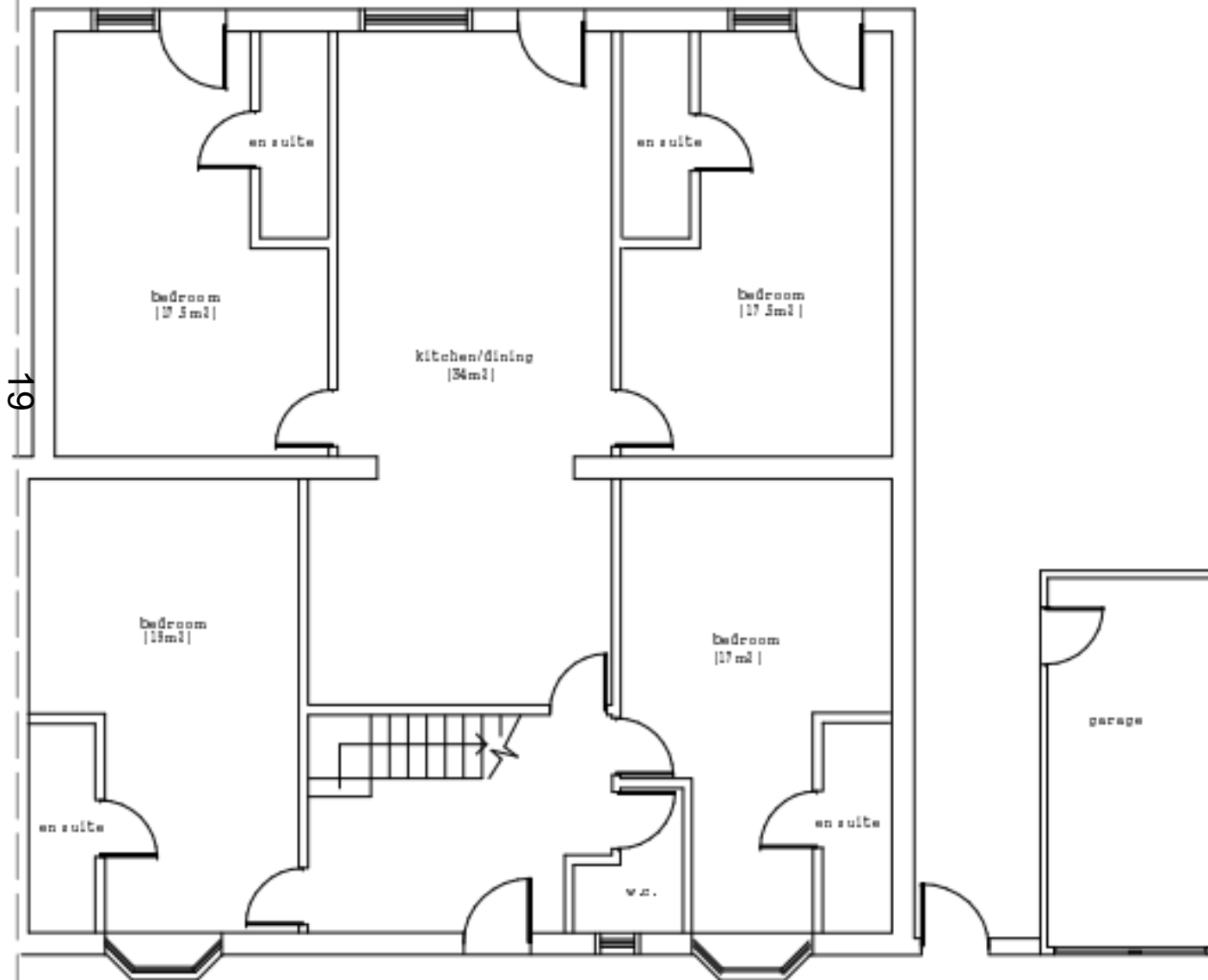


18

www.oxford.gov.uk



Existing Plans



www.oxford.gov.uk



**OXFORD
CITY
COUNCIL**

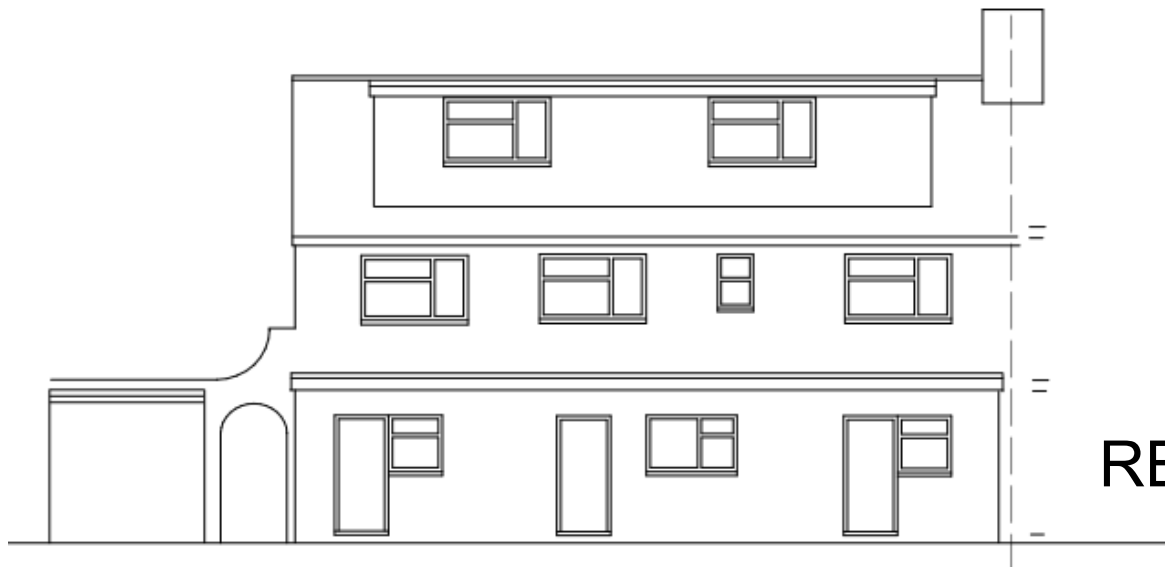


Existing Elevations

20 FRONT



REAR



www.oxford.gov.uk



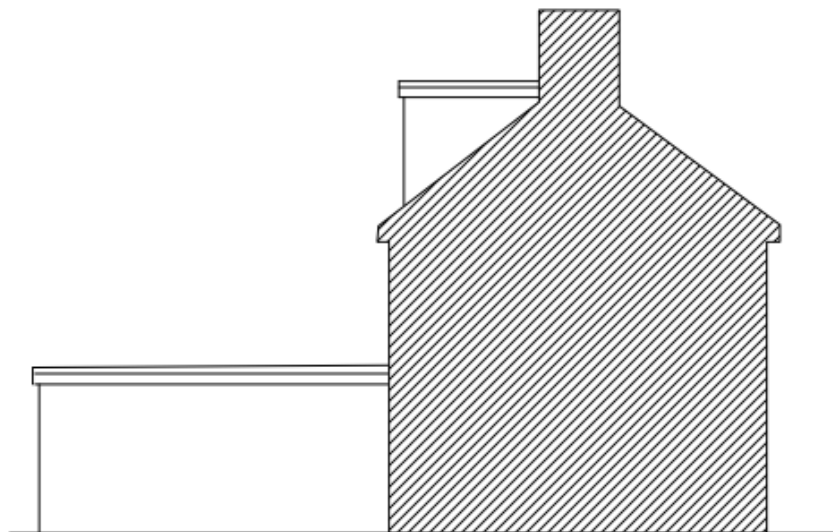
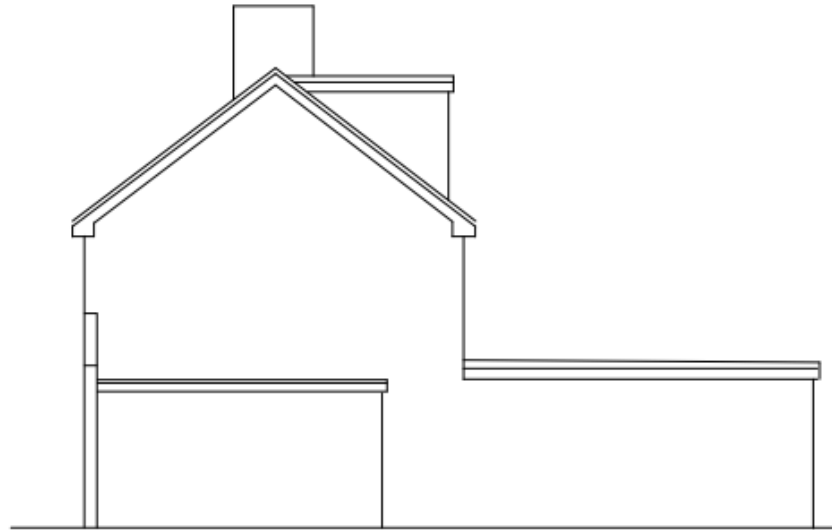
**OXFORD
CITY
COUNCIL**



Existing Elevations

21

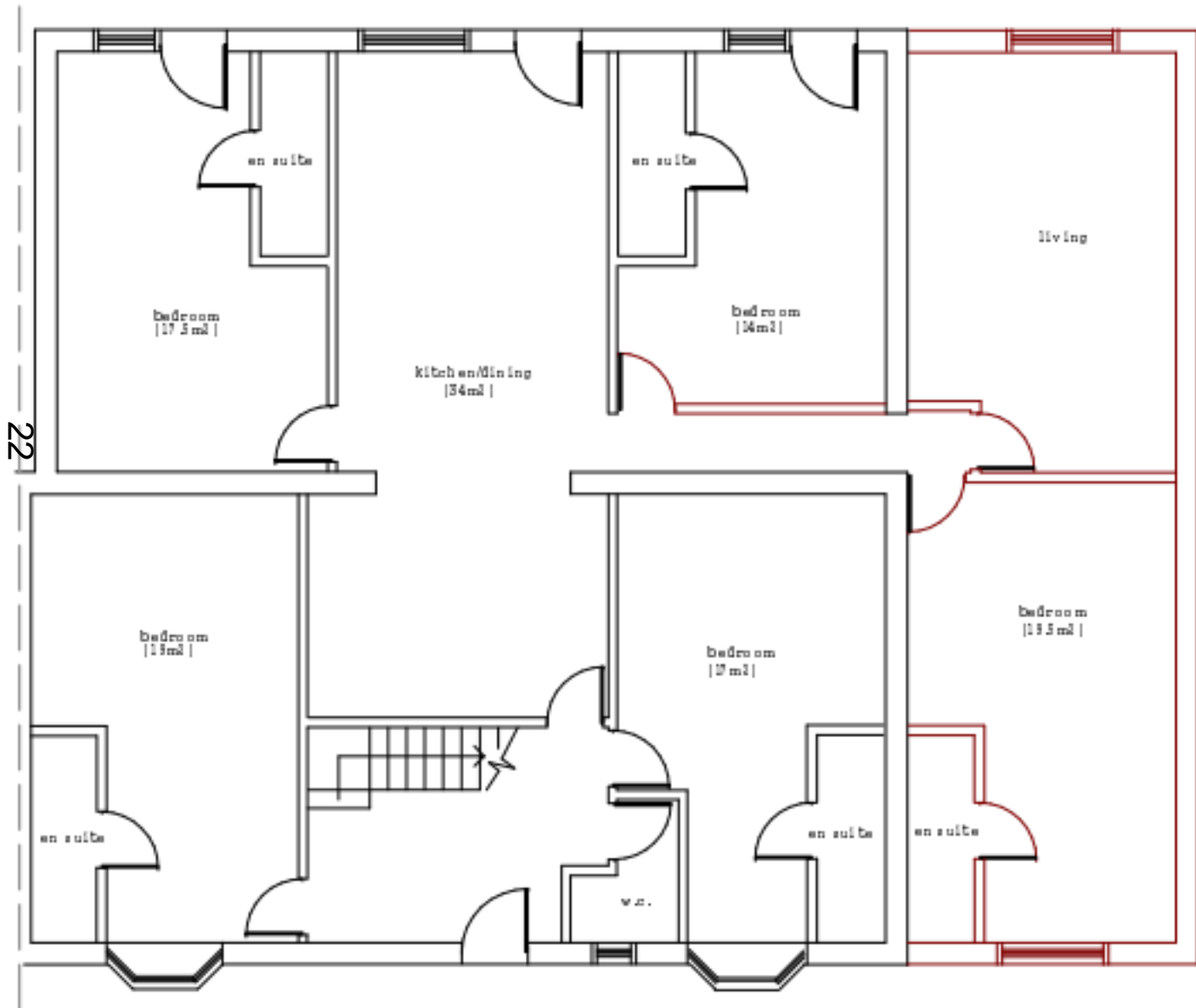
SIDE (S)



SIDE (N)



Proposed Plans



www.oxford.gov.uk



**OXFORD
CITY
COUNCIL**



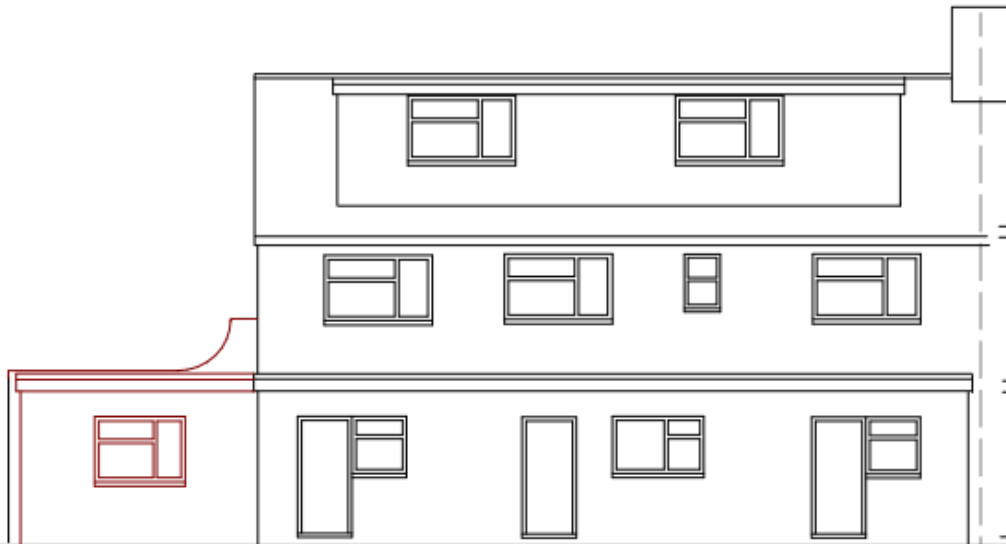
Proposed Elevations

23

FRONT



REAR



www.oxford.gov.uk



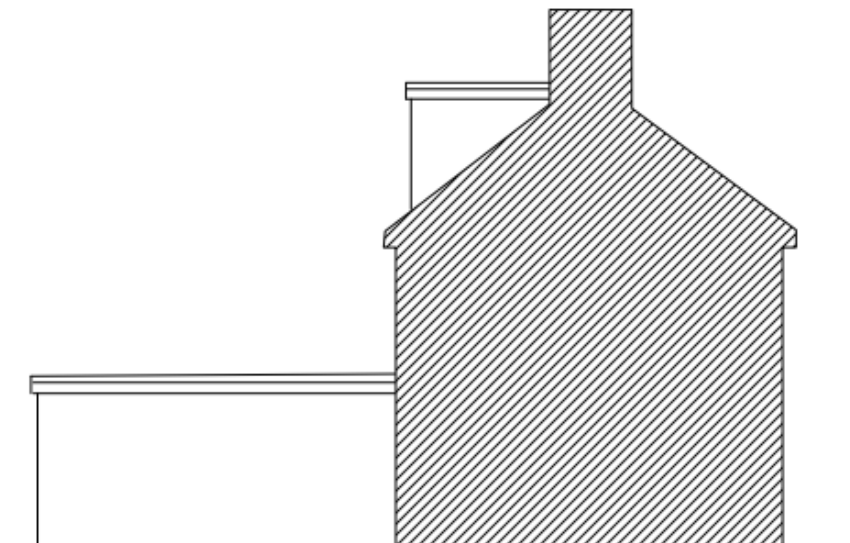
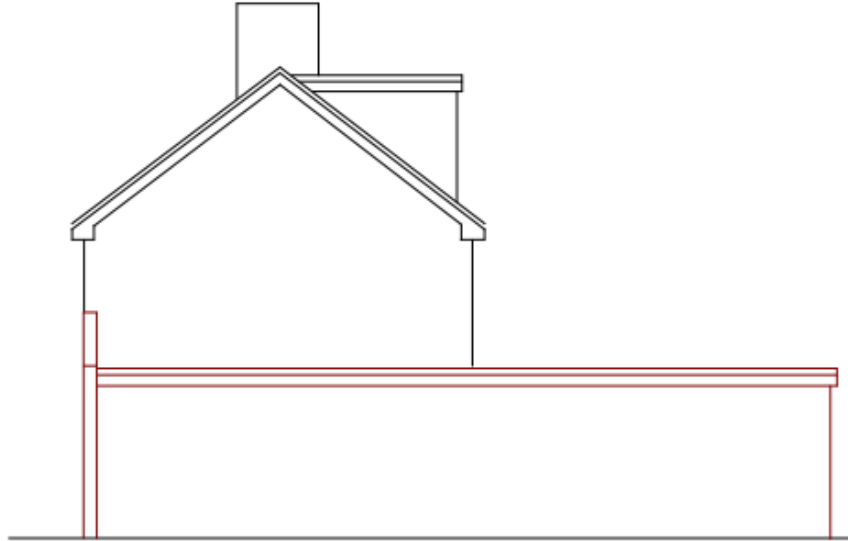
**OXFORD
CITY
COUNCIL**



Proposed Elevations

24

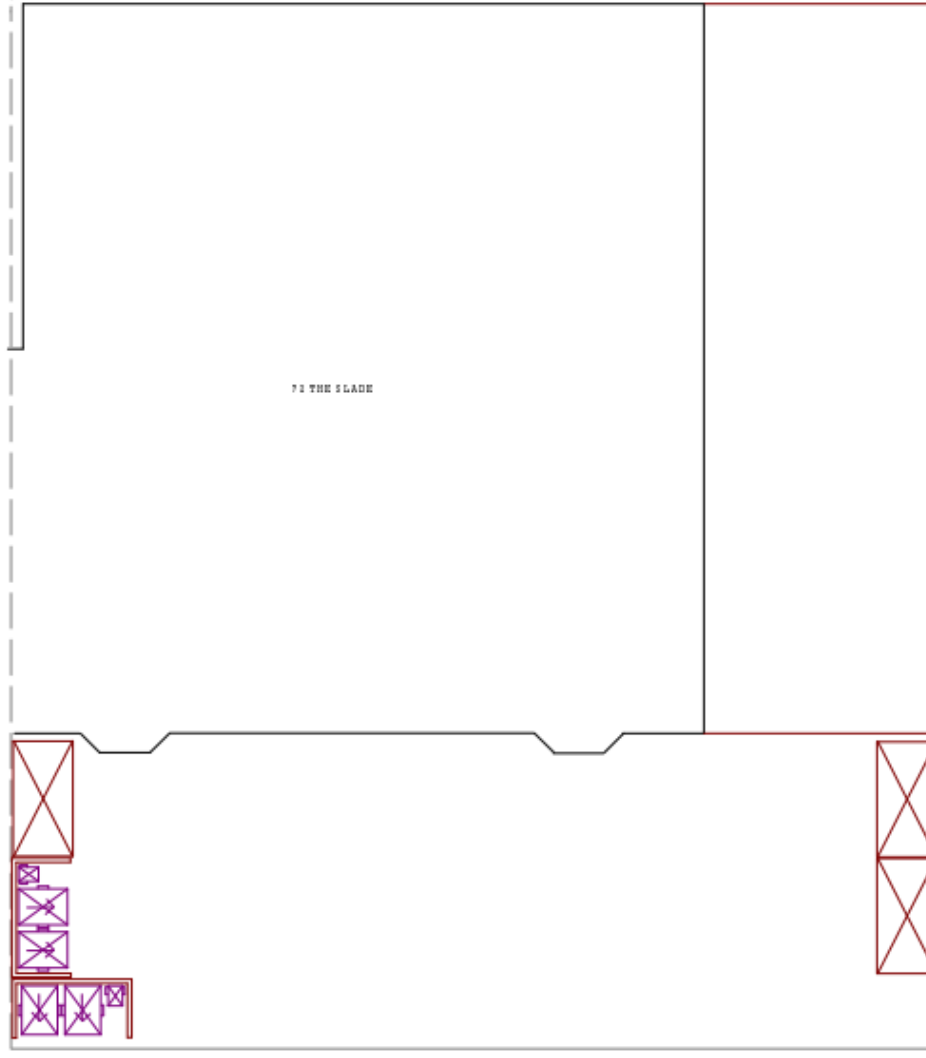
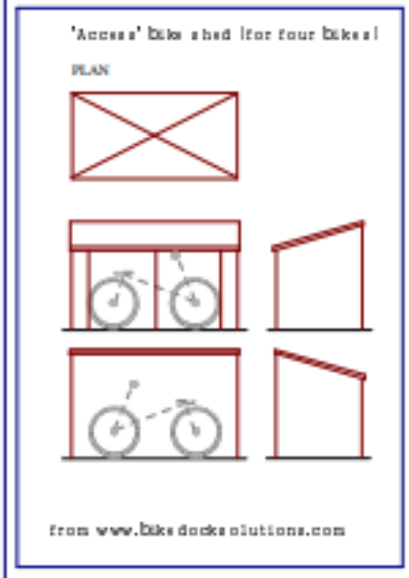
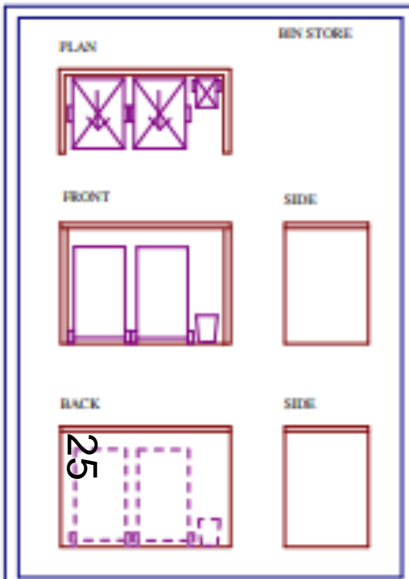
SIDE (S)



SIDE (N)



Proposed Bin and Bike Store



www.oxford.gov.uk



**OXFORD
CITY
COUNCIL**



This page is intentionally left blank